






COLORAMA ACOUSTIC MULTICOLOUR

- Exclusive Colorama Trevira CS fabric woven with acoustic and multicolour yarns for texture and tonality
- Superior acoustic properties which belie its agile appearance
- Standard 100 by Oeko-Tex® certified, free from harmful substances
- Washable up to 60°

APPLICATIONS



FABRIC PROPERTIES

	Transparent
	92% Polyester Trevira CS, 8% Polyester
	140 g/m ²
	0.40 mm
	325 cm
	330 cm
	330 cm

FEATURES / TECHNICAL PROPERTIES

	6
	Alpha-w = 0.45 / 0.65
	Flame retardant
	Applicable in humid areas
	Suitable for Wave
	Oeko-Tex

WASHING INSTRUCTIONS

	 -1%	 -2%		 -0.5%		
	 -1%					
						

FIRE PROTECTION

Class 1 (EN 13773)
B1 (DIN 4102-1)
M1 (NF P 92-503/5/7)
Type B (BS 5867-2)



Colorama Acoustic Multicolour
OPTICAL AND SOLAR COEFFICIENTS (± 5%, DIN EN 410)

Colour	T _v	T _s	R _s	A _s	T _{UV}	F _c	g _{tot}
111	44.1	43.5	51.6	4.9	15.3	0.62	0.45
131	37.8	38.2	42.0	19.8	11.2	0.68	0.49
161	33.9	34.1	37.4	28.5	9.3	0.71	0.51
181	31.0	30.8	29.2	40.0	7.6	0.76	0.55
211	43.4	43.3	48.9	7.8	14.0	0.64	0.46
261	34.5	34.4	34.6	31.0	9.2	0.73	0.52
431	34.8	38.1	41.1	20.8	9.1	0.69	0.49
461	32.1	36.3	38.7	25.0	7.0	0.70	0.50

T_v Visible light transmission

R_s Solar reflectance

T_{UV} UV transmission

g_{tot} Total g-value

T_s Solar transmission

A_s Solar absorption

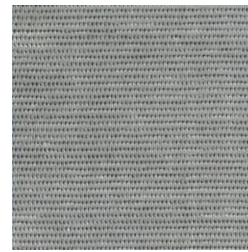
F_c Shading factor

F_c + g_{tot}: Value calculated with glass: 0.72 / U_g = 1.6 W/m² K, DIN EN 13363-1

Colorama Acoustic Multicolour

111

131

161

181

211

261

431

461

Colours shown are not binding